



Objective

The student will match initial phonemes to graphemes.

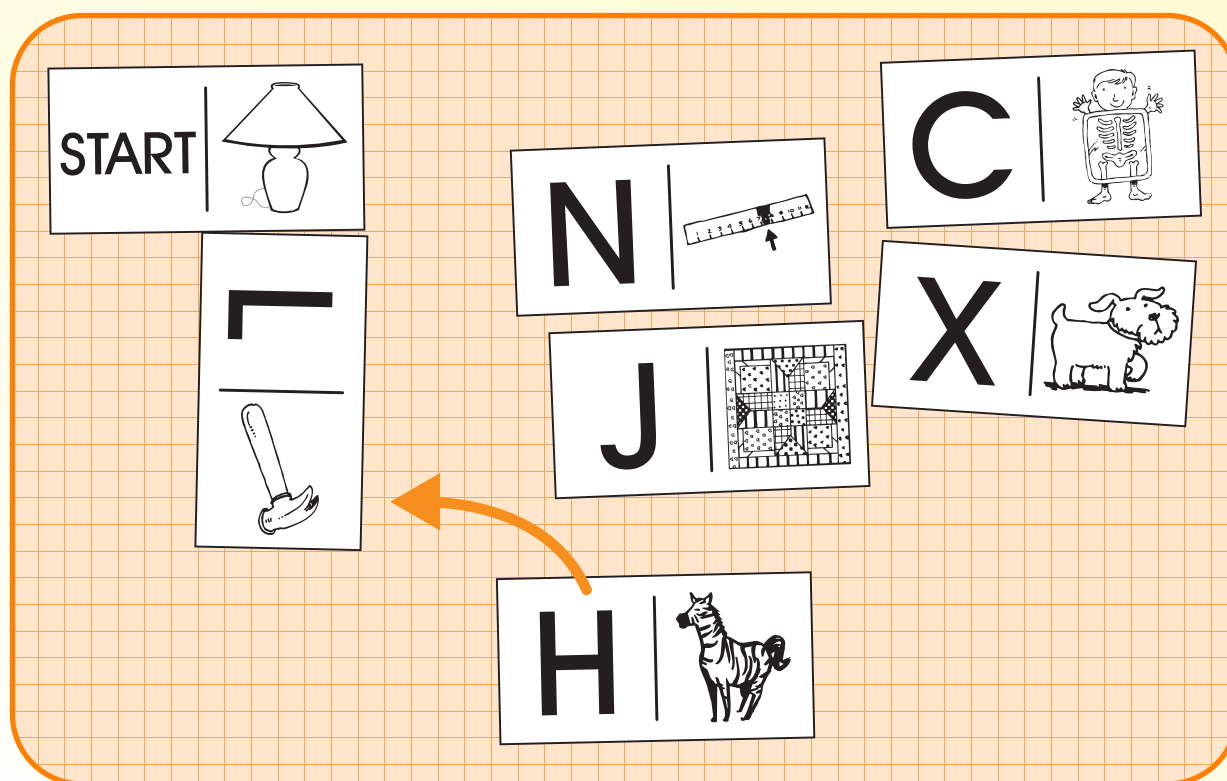
Materials

- ▶ Picture/letter domino cards
Copy on card stock, laminate, and cut.

Activity

Students match initial sounds of pictures to letters while playing a domino game.

1. Scatter domino picture cards face up on a flat surface.
2. Taking turns, student one places the START domino on the table, names the picture on the other side of the domino, and says its initial sound (i.e., “lamp, /l/”).
3. Looks for a domino with the letter that corresponds to the initial sound, names it, and says its sound (i.e., “l, /l/”). Connects the two dominoes.
4. Student two names the picture on the other side of the domino (i.e., “hammer”), says its initial sound (i.e., “/h/”), and finds the domino with the corresponding letter. Names the letter and says its sound (i.e., “h, /h/”). Connects it to the domino.
5. Continue until all dominoes are connected.
6. Peer evaluation



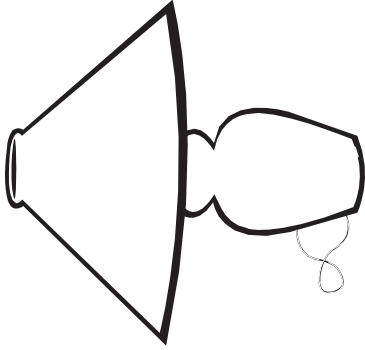
Extensions and Adaptations

- ▶ Make and use final sound picture/letter domino cards.
- ▶ Make and use medial sound picture/letter domino cards.
- ▶ Make and use upper- and lowercase letter domino cards.

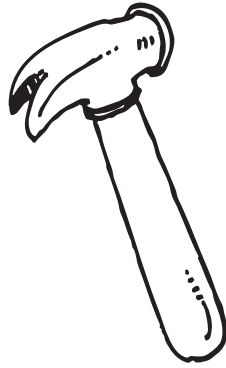
Phonics

Letter-Sound Dominoes

P.016



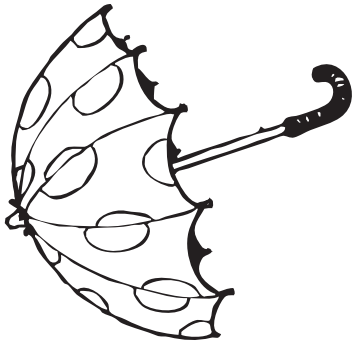
START



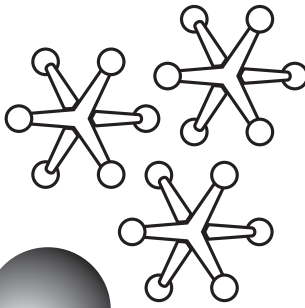
L



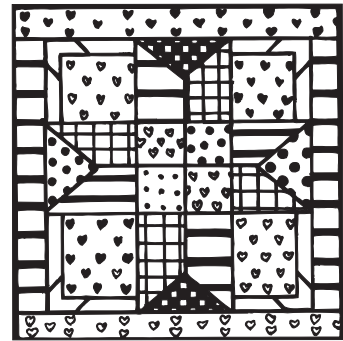
H



Z



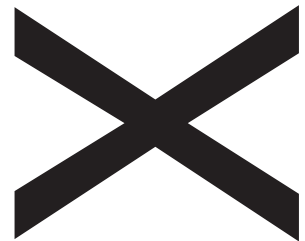
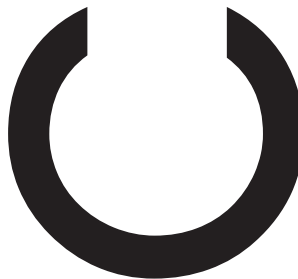
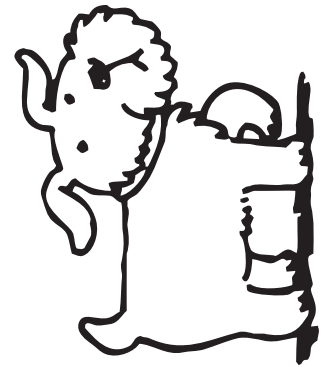
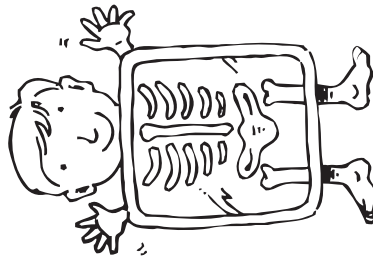
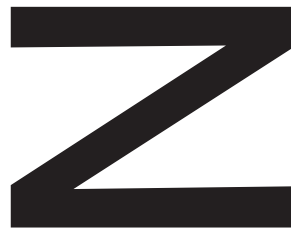
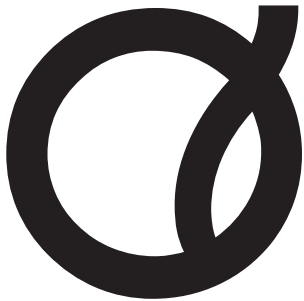
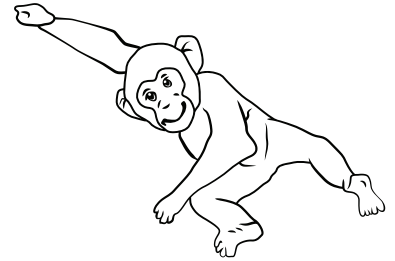
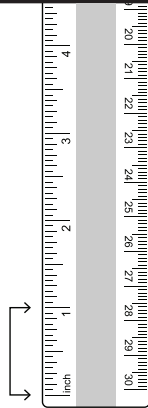
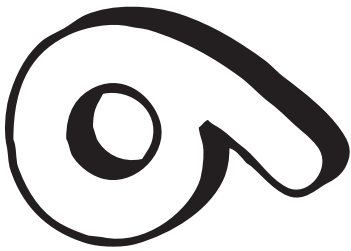
U



J

domino cards: START/lamp, L/hammer, H/zebra, Z/umbrella, U/jacks, J/quilt





domino cards: Q/nine, N/inch, l/monkey, M/cat, C/x-ray, X/dog



Phonics

Letter-Sound Dominoes

P.016



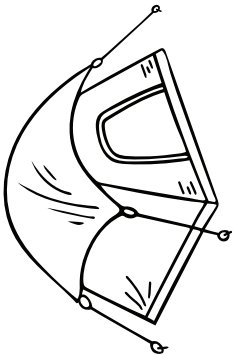
D



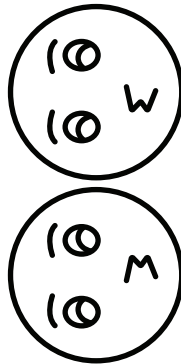
W



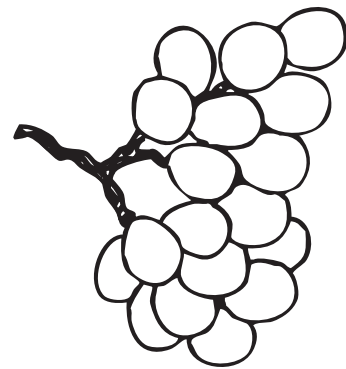
P



O



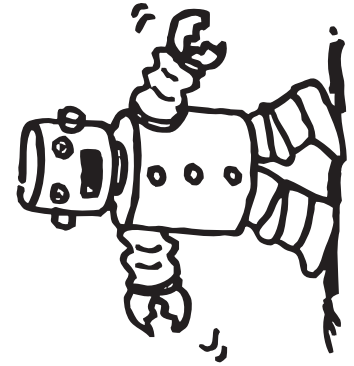
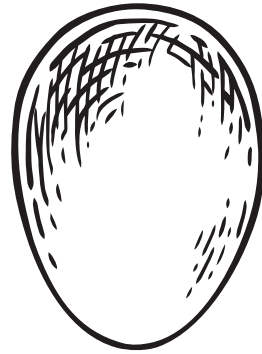
T



K

domino cards: D/wink, W/pencil, P/octopus, O/tent, T/kiss, K/grapes

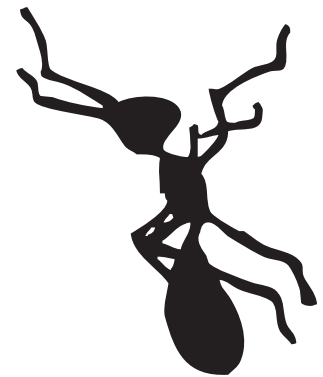
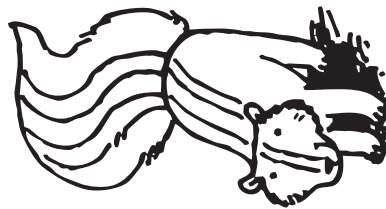
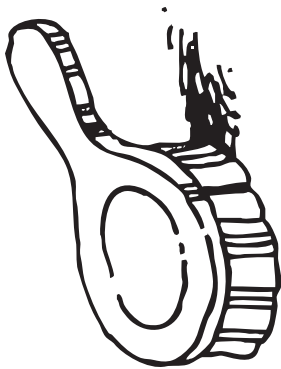




G

Y

E



R

B

S

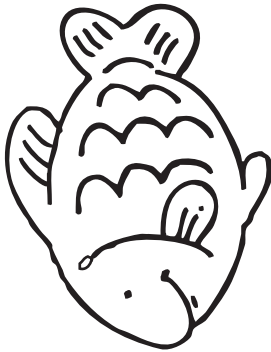
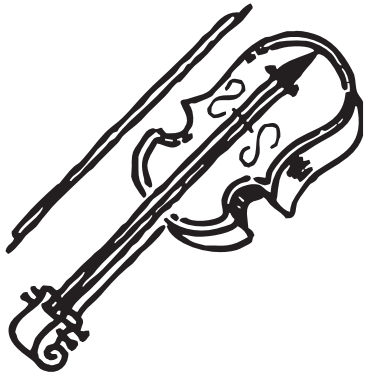
domino cards: G/yak, Y/egg, E/robot, R/brush, B/skunk, S/ant



Phonics

Letter-Sound Dominoes

P.016



END

A

V

F

domino cards: A/violin, V/fish, F/END



P.016

Letter-Sound Dominoes

<hr/>	<hr/>	<hr/>
<hr/>	<hr/>	<hr/>

blank domino cards

